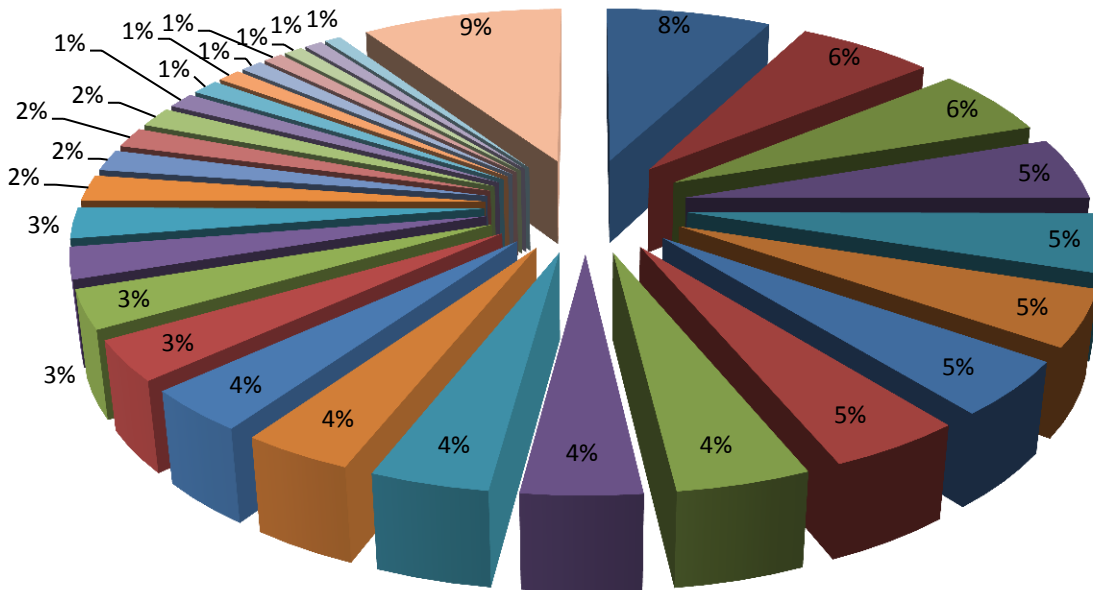


Period: 01.10.2016-30.10.2016

Most popular brands

■ VOLKSWAGEN ■ TOYOTA ■ FORD ■ RENAULT ■ HYUNDAI ■ LADA ■ KIA ■ MERCEDES-BENZ ■ OPEL ■ NISSAN
 ■ AUDI ■ BMW ■ CHEVROLET ■ MITSUBISHI ■ SKODA ■ HONDA ■ MAZDA ■ small-series ■ PEUGEOT ■ VOLVO
 ■ wrong requests ■ CITROEN ■ LEXUS ■ SUZUKI ■ DAEWOO ■ LAND ROVER ■ SUBARU ■ FIAT ■ SSANGYONG ■ other brands



Most popular models quantity

1	FORD Focus	1 315
2	VOLKSWAGEN Passat	1 258
3	OPEL Astra	1 181
4	SKODA Octavia	925
5	LADA Samara	757
6	MERCEDES-BENZ E-Klasse	735
7	TOYOTA Camry	684
8	TOYOTA Corolla	666
9	BMW 5er	596
10	KIA Rio	578
11	BMW 3er	577
12	AUDI A6	525
13	VOLKSWAGEN Polo	523
14	MITSUBISHI Lancer	505
15	TOYOTA RAV4	495
16	MAZDA 3	484
17	TOYOTA Land Cruiser Prado	480
18	KIA Sportage	479
19	VOLKSWAGEN Golf	466
20	AUDI A4	455
21	MAZDA 6	453
22	HYUNDAI Solaris	452
23	RENAULT Megane	451
24	CHEVROLET Aveo	449
25	HONDA CR-V	442
26	CHEVROLET Cruze	440
27	HYUNDAI Tucson	424
28	TOYOTA Land Cruiser	423
29	MERCEDES-BENZ C-Klasse	421
30	CHEVROLET Lacetti	414
31	KIA cee'd	413
32	FORD Mondeo	404
33	HONDA Accord	386
34	VOLKSWAGEN Transporter	386
35	NISSAN Qashqai	378
36	RENAULT Logan	354
37	LADA Priora	338
38	NISSAN X-Trail	334
39	OPEL Vectra	331
40	LEXUS RX	326

Decoded VIN: **62 752** (+12,55%***)

Wrong VIN*: **1 050** (+1,74%***)

Decoded via API**: **2 375 340** (+1,14%***)

* - VIN is called "wrong" if the car brand was not define. We analyzed these VINs and determined what huge part of these is incorrect! Usually an error located in WMI section. For example, instead "VWV" was entered "WVW" or instead "Z8T" was entered "28T", "ZBT" etc. Also may be enter insorrect symbols like a dots, dashes etc which not provided by ISO 3779-1983 standard.

You can read about the VIN structure on the website: <http://www.vinformersu>

** - Decoding is performed on websites in the Internet or through specialized software via the API.

*** - As compared to the previous month.

